

## Certificate of Analysis

Prepared for:

**Phoenix Natural Wellness**

**Product Description:** Hemp THC FREE CBD Tincture - 500mg/30mL, TF, HSO, Natural

**Invoice Number:** 2019-1364A

**Lot Number:** T-33919-B10

**Best By Date:** Dec 04, 2020

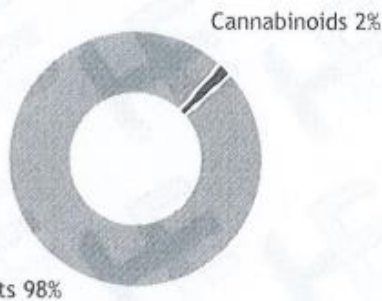
**Product Code:** T-500-TF-HSO-NA-30mL

**Date of Analysis:** Dec 06, 2019

**Manufacture Date:** Dec 05, 2019

### Cannabinoid Potency - Expected CBD: 16.67 mg/mL $\pm$ 10%

#### % Total Cannabinoids



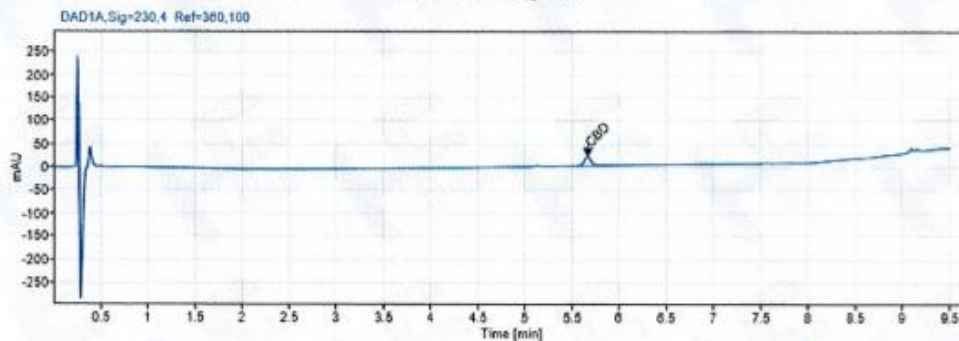
	mg/mL	%
<b>Total CBD:</b>	<b>18.76 mg/mL</b>	<b>1.88 %</b>
CBD:	18.76 mg/mL	1.88 %
CBDa:	ND	ND
d9-THC:	ND	ND
CBC:	ND	ND
CBG:	ND	ND
CBGa:	ND	ND
CBN:	ND	ND
CBDV:	ND	ND
d8-THC:	ND	ND
THCa:	ND	ND

\*Total d9-THC and CBD are calculated taking into account the loss of a carboxyl group during decarboxylation.  
The formulas are as follows:  $d9\text{-THC} = d9\text{THC} + (\text{THCa} \times 0.877)$   $\text{CBD} = \text{CBD} + (\text{CBDa} \times 0.877)$   
\*\*Any compounds with results listed as "ND" were not detected during analysis.

**Density:** 0.845 (kg/m<sup>3</sup>)

**Specific Gravity:** 0.848

#### Chromatogram



Approved By: S. Scarabosio  
Analytical Laboratory Manager  
Dec 09, 2019

Analyzed via HPLC Under These Conditions: Humidity: 25% Temperature: 71.2°F



ISO 9001:2015 Certificate Number: US4293

	Product Specification Sheet: HSO Tincture, Bottled CBD Isolate-Based	Document #: PSS-T-ISO-HSO-NA-30mL Version: 1.3 Issue Date: 11/01/2019 Supersedes: 09/16/2019
	Product Code: T-500-TF-HSO-NA-30mL	Completed By: SS Invoice #: 2019-1364A

## SECTION 1: PRODUCT DETAILS

PRODUCT NAME	Hemp-derived Cannabidiol (CBD) Tincture – Hemp Seed Oil Base, CBD Isolate-Based		
PRODUCT DESCRIPTION	CBD Tincture in Hemp Seed Oil, CBD Isolate-Based		
INTENDED USE	For oral consumption.		
COUNTRY OF ORIGIN	USA	LOT #	T-33919-B10
MANUFACTURE DATE	Dec 04, 2019	CBD POTENCY	18.76 mg/mL
BEST BY DATE	Dec 05, 2020	NET WEIGHT	1 fl. oz (30 mL) per bottle

## SECTION 2: INGREDIENT AND NUTRITION INFORMATION

INGREDIENTS LIST	NUTRITION FACTS PANEL																												
<p>Ingredients: Organic Hemp Seed Oil, Hemp Cannabidiol (CBD) Isolate.</p> <p><i>Store in original container in a cool, dark place. Keep out of direct light and humidity.</i></p> <p><i>Manufactured in a facility that handles soy, salmon, anchovy, and walnuts.</i></p> <p><i>The FDA has not evaluated this product for safety or efficacy. This product is intended for oral use. This product is not intended to diagnose, treat, cure or prevent any disease.</i></p>	<p><b>Nutrition Facts</b></p> <p>30 servings per container</p> <p><b>Serving size</b> .2tsp (1mL)</p> <hr/> <p><b>Amount per serving</b></p> <p><b>Calories</b> <b>10</b></p> <hr/> <p><b>% Daily Value*</b></p> <table> <tr> <td><b>Total Fat</b> 1g</td><td><b>1%</b></td></tr> <tr> <td><b>Saturated Fat</b> 0g</td><td><b>0%</b></td></tr> <tr> <td><b>Trans Fat</b> 0g</td><td></td></tr> <tr> <td><b>Cholesterol</b> 0mg</td><td><b>0%</b></td></tr> <tr> <td><b>Sodium</b> 0mg</td><td><b>0%</b></td></tr> <tr> <td><b>Total Carbohydrate</b> 0g</td><td><b>0%</b></td></tr> <tr> <td><b>Dietary Fiber</b> 0g</td><td><b>0%</b></td></tr> <tr> <td><b>Total Sugars</b> 0g</td><td></td></tr> <tr> <td><b>Includes 0g Added Sugars</b></td><td><b>0%</b></td></tr> <tr> <td><b>Protein</b> 0g</td><td></td></tr> <tr> <td><b>Vitamin D</b> --mcg</td><td><b>--%</b></td></tr> <tr> <td><b>Calcium</b> --mg</td><td><b>--%</b></td></tr> <tr> <td><b>Iron</b> --mg</td><td><b>--%</b></td></tr> <tr> <td><b>Potassium</b> --mg</td><td><b>--%</b></td></tr> </table> <p><small>*The % Daily Value tells you how much a nutrient in a serving of food contributes to a daily diet. 2,000 calories a day is used for general nutrition advice.</small></p>	<b>Total Fat</b> 1g	<b>1%</b>	<b>Saturated Fat</b> 0g	<b>0%</b>	<b>Trans Fat</b> 0g		<b>Cholesterol</b> 0mg	<b>0%</b>	<b>Sodium</b> 0mg	<b>0%</b>	<b>Total Carbohydrate</b> 0g	<b>0%</b>	<b>Dietary Fiber</b> 0g	<b>0%</b>	<b>Total Sugars</b> 0g		<b>Includes 0g Added Sugars</b>	<b>0%</b>	<b>Protein</b> 0g		<b>Vitamin D</b> --mcg	<b>--%</b>	<b>Calcium</b> --mg	<b>--%</b>	<b>Iron</b> --mg	<b>--%</b>	<b>Potassium</b> --mg	<b>--%</b>
<b>Total Fat</b> 1g	<b>1%</b>																												
<b>Saturated Fat</b> 0g	<b>0%</b>																												
<b>Trans Fat</b> 0g																													
<b>Cholesterol</b> 0mg	<b>0%</b>																												
<b>Sodium</b> 0mg	<b>0%</b>																												
<b>Total Carbohydrate</b> 0g	<b>0%</b>																												
<b>Dietary Fiber</b> 0g	<b>0%</b>																												
<b>Total Sugars</b> 0g																													
<b>Includes 0g Added Sugars</b>	<b>0%</b>																												
<b>Protein</b> 0g																													
<b>Vitamin D</b> --mcg	<b>--%</b>																												
<b>Calcium</b> --mg	<b>--%</b>																												
<b>Iron</b> --mg	<b>--%</b>																												
<b>Potassium</b> --mg	<b>--%</b>																												

*This document is provided for documentation purposes only. The information contained herein is believed to be accurate and represents the best information currently available to Hammer Enterprises Integrated Solutions, LLC. However, Hammer Enterprises Integrated Solutions, LLC makes no warranty, expressed or implied, regarding such information, and assumes no liability resulting from its use. Users should make their own investigations to determine the information suitability for their particular purpose. If there are any questions concerning the information contained in this sheet or its applicability to a particular use, the user is instructed to contact Hammer Enterprises Integrated Solutions, LLC. Hammer Enterprises Integrated Solutions, LLC assumes no responsibility for injury from the use of the product described in this sheet in a way different from that provided in the label directions.*